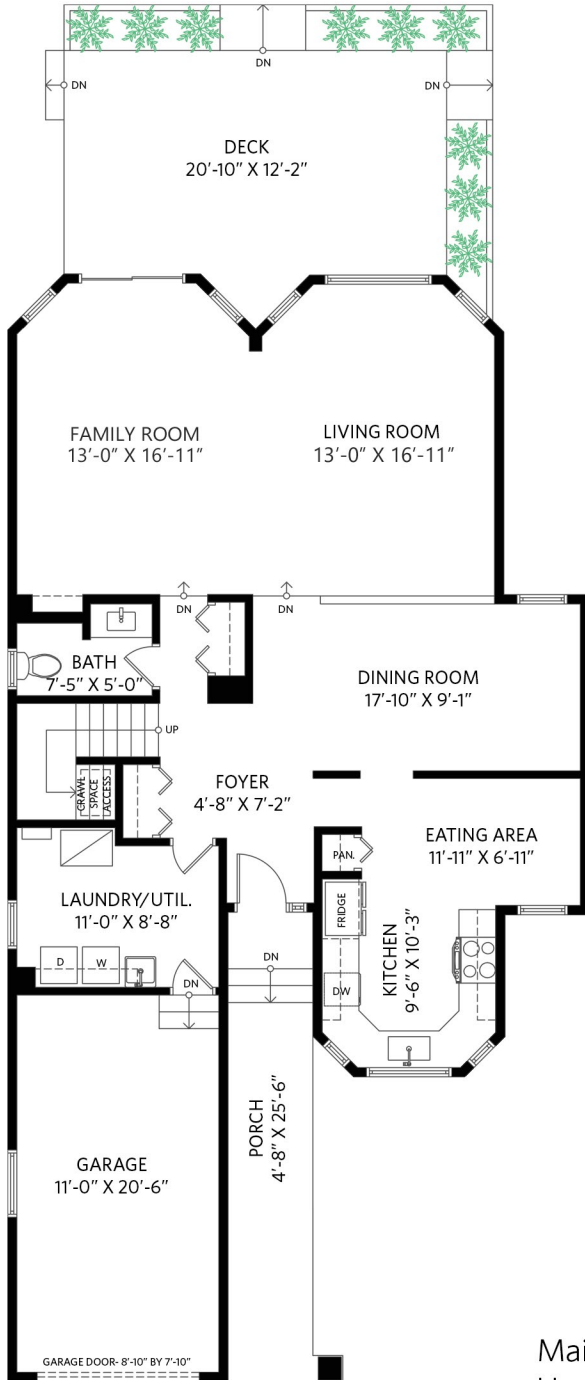


861 Porteau Place, North Vancouver

3 bedrooms + den + 2 1/2 bathrooms

Main Floor - 1,185 sq.ft.

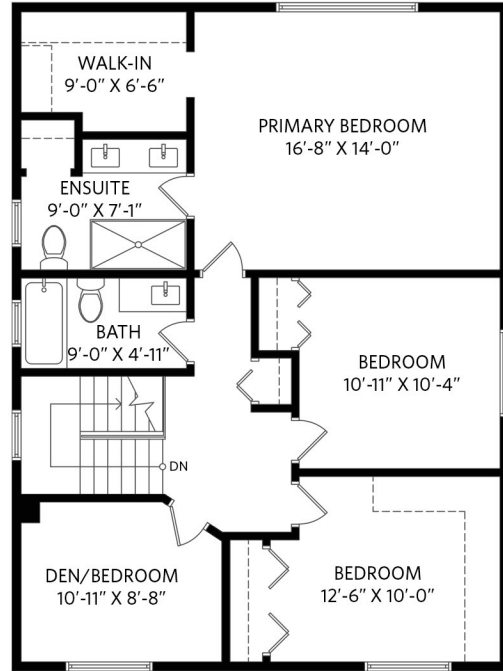
Ceiling height - 8' 0" to 8' 7"



ENTRANCE

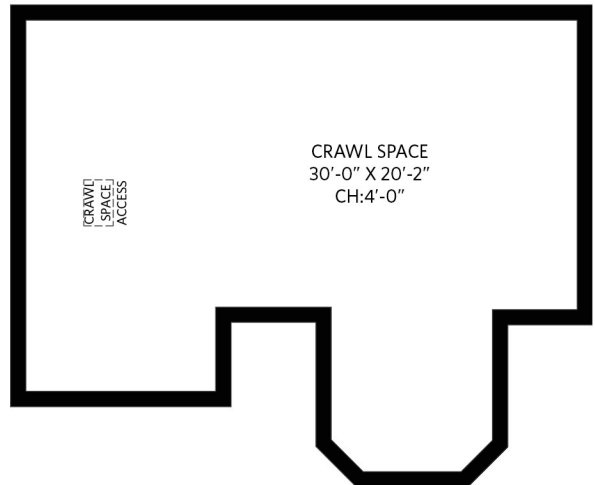
Upper Floor - 986 sq.ft.

Ceiling height - 8' 0"



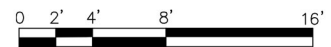
Crawl Space - 693 sq.ft.

Ceiling height - 4' 0"



Main Floor: 1,185 sq.ft.
 Upper Floor: 986 sq.ft.
Total Interior: 2,171 sq.ft.

Attached Garage: 253 sq.ft.
 Exterior Living: 400 sq.ft.
 Crawl Space: 693 sq.ft.



BERNADETTE DUNNIGAN
 PERSONAL REAL ESTATE CORPORATION
 778.835.0599
 www.DunniganHomes.com
 bernadette@dunniganhomes.com • 101 - 3151 Woodbine Drive, North Vancouver, BC V7R 2S4
 METRO VANCOUVER • NORTH SHORE • WHISTLER • SQUAMISH
This communication is not intended to cause or induce breach of an existing agency agreement.



www.OPTIMUMFLOORPLANS.com 604-729-5033

2D & 3D Floor Plans 4K Matterport Tours



Floor plan measurements, dimensions, square footage, existing structures & features are approximations and for illustrative purposes only. We make no guarantee, warranty, or representation, expressed or implied, as to the accuracy and completeness of this rendering. Independent verification is recommended. E&O Insured for \$1,000,000