

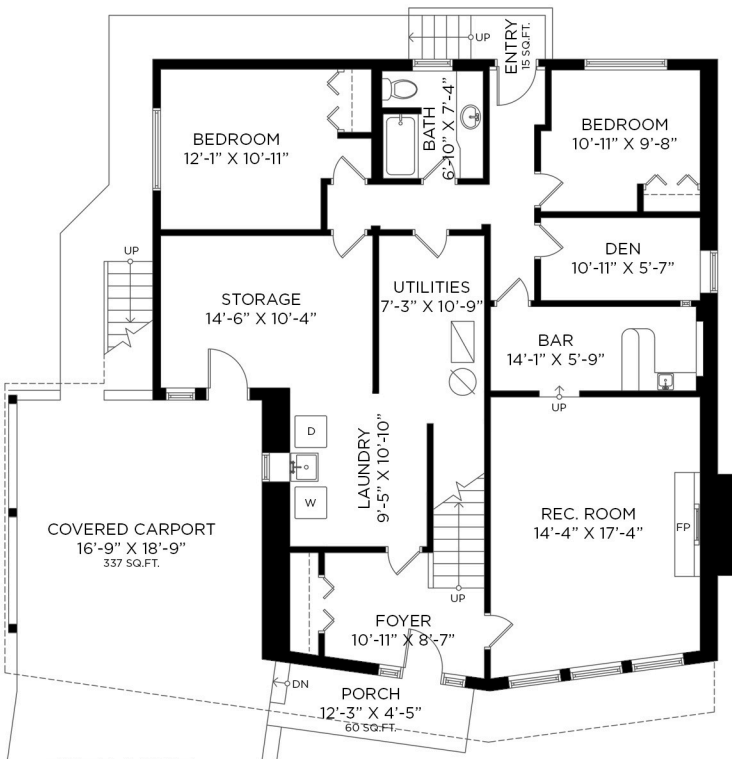
4937 BEAMISH COURT BURNABY, BC

5 BEDROOMS + DEN + 3 BATHROOMS

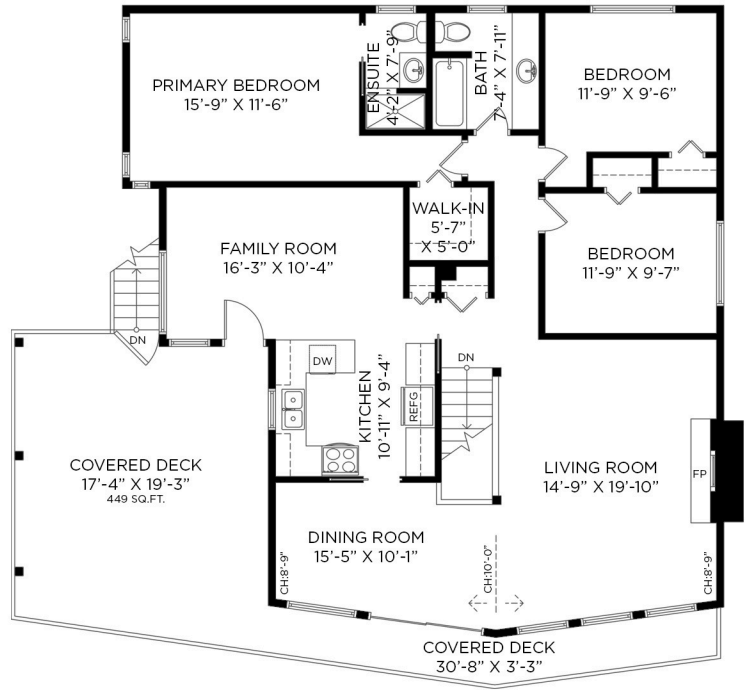
LOWER FLOOR: 1,497 SQ.FT.
 MAIN FLOOR: 1,528 SQ.FT.
 TOTAL INTERIOR: 3,025 SQ.FT.

COVERED CARPORT: 337 SQ.FT.
 EXTERIOR LIVING: 524 SQ.FT.

LOWER FLOOR - 1,497 SQ.FT.
 CEILING HEIGHT: 7'-7" TO 8'-0"



MAIN FLOOR - 1,528 SQ.FT.
 CEILING HEIGHT: 8'-0" TO 10'-0"



ENTRANCE

DUNNIGAN HOMES

REAL ESTATE GROUP

Metro Vancouver | North Shore | Whistler | Squamish



bernadette@dunniganhomes.com
 778.835.0599



DunniganHomes.com



Bernadette
Dunnigan PREC*



Lucia Richmond



Melody Morris