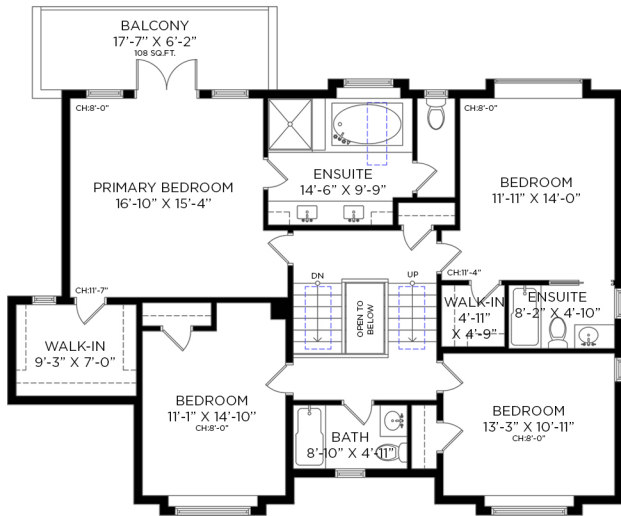
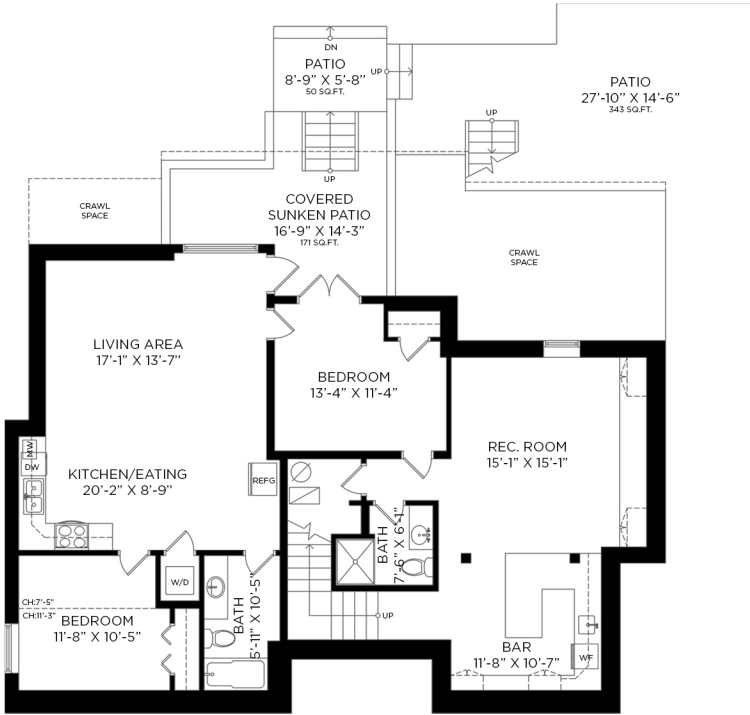


UPPER FLOOR - 1,360 SQ.FT.
 CEILING HEIGHT: 8'-0" TO 11'-9"



LOWER FLOOR - 1,561 SQ.FT.
 CEILING HEIGHT: 7'-5" TO 11'-3"



4825 SKYLINE DRIVE
 NORTH VANCOUVER, BC

6 BEDROOMS + DEN + 5 1/2 BATHROOMS

LOWER FLOOR:	1,561 SQ.FT.
MAIN FLOOR:	1,561 SQ.FT.
UPPER FLOOR:	1,360 SQ.FT.
TOTAL INTERIOR:	4,482 SQ.FT.
ATTACHED GARAGE:	401 SQ.FT.
EXTERIOR LIVING:	1,176 SQ.FT.
PARKING AREA:	175 SQ.FT.



ENTRANCE

MAIN FLOOR - 1,561 SQ.FT.
 CEILING HEIGHT: 8'-3" TO 21'-6"

DUNNIGAN HOMES

REAL ESTATE GROUP

Metro Vancouver | North Shore | Whistler | Squamish

DunniganHomes.com



OAKWYN REALTY



Bernadette Dunnigan
 PREC*



Lucia Richmond



Melody Morris

This communication is not intended to cause or induce breach of any existing agency agreements.



Floor plan measurements, dimensions, square footage, existing structures & features are approximations and for illustrative purposes only. E&O insured for \$1,000,000

